

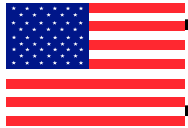
WESTERN MOTORS SERVICE * DC MOTORS from 6V thru 72V

PLACE
STAMP

WESTERN MOTORS SER. & MFG.
1211 23rd AVE.
ROCKFORD, IL. 61104 USA



PLACE MAILING
LABEL HERE
(SOUTH)



* FALL / WINTER 2015/2016 * NEWSLETTER / FLYER *



Check out the complete new 2015 catalog on our web site with search options at www.wms1.com
Or email us at westernmotors@wms1.com



DE FRAME GASKET
FOR WESTERN AND
FISHER SNOW PLOW
MOTORS

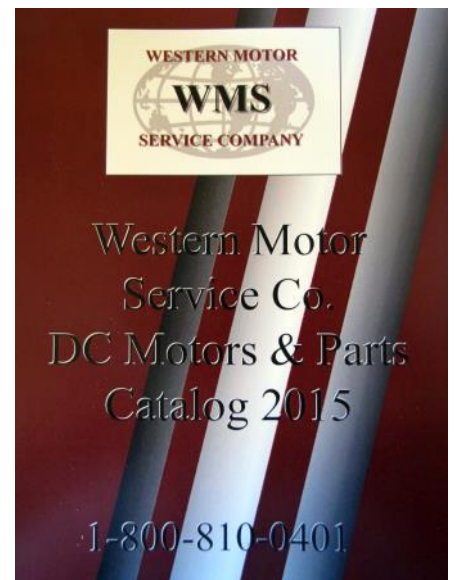
PART # WG-994

NEW 2015 / 2016
MOTORS & PARTS CATALOG

*Our new updated 2015 Catalog has over
400 pages of DC motors and parts and
is available delivered for \$25.00*

*Also available at "No Cost" is the
downloadable version of the 2015 catalog
which has fast & easy to use search options.*

Call or email for a free download!



PHONE TOLL FREE 800-810-0401 or call 815-986-2214 <> FAX 815-986-2566

ITEMS IN STOCK ARE SHIPPED THE SAME DAY VIA. UPS IF ORDERED BY 3 PM (C.S.T.)

OPEN ACCOUNTS ARE AVAILABLE WITH APPROVED CREDIT <> WE ALSO SHIP ** COD / VISA / MC / DISCOVER / AMEX **

**** Notice**** We now offer shipping via USPS, SPEE-DEE Delivery Service & UPS **
Spee-Dee is next day to, IL / IA / WI & certain area's in MN & NE ask about shipping to your area.

**“WMS” PART NUMBER W-8060L**

12V * “HD” 1.2KW (F & R)

(2) POST TANG SHAFT MOTOR

REPLACES, W8060D, W8023L, W-8060S

W-8023HD, W-8060SG

(APPLICATIONS)

(3” SUPERWINCH MOTORS)

(FOR WINCHES AND MARINE LIFTS)

(SHAFT DIA. IS .520”)

(THE FLAT AREA IS .170” WIDE & .205” DEEP)

(HD motor has two 5/16 X 18 terminal posts)

Height of shaft to end of case is .640”/16.25mm

Motor length is 7.00” / 177-8mm

“DE frame is for shipping only”**Double Ball Bearing****“WMS” PART NUMBER W-7643**

12V F&R 3 POST HD WINCH MOTOR

REPLACES NUMBERS,645041, W8933, MBJ-4403, MUR6202 ,
MBJ-4407, W-9133, MBJ-4415, 458001,
MUR6302S, W7643, MUR6302

(APPLICATIONS)

(BRADEN INDUSTRIES, RAMSEY WINCH
CAM INDUSTRIES, HICKEY EQUIPMENT
DESERT DYNAMICS, TULSA WINCH
RAMSEY & PIERCE WINCH)

(MOTOR BODY LENGTH IS 8” LONG)

6 HP

**“WMS” PART NUMBER W-7608**

12V F&R 3 POST HD WINCH MOTOR

(20) SPLINE ARMATURE SHAFT

REPLACES NUMBERS,W8923D, W7608, W7623, MUQ6205S,
26629, M2401, M2404, 15877, 458058

(APPLICATIONS)

(WARN WINCH, SUPERWINCH
ARCO MARINE, WARN INDUSTRIES)

(MOTOR BODY LENGTH IS 7” LONG)

6 HP

**“WMS” PART NUMBER W-8911D**

12V (CCW/DBB) SLOT SHAFT MOTOR

(2) FIELD COIL HIGH RPM MOTOR

WITH THE THRU BOLTS AT THE 3 & 9 POSITION

REPLACES, 46-4058, W8911, 108111E,
11212484, W-8911, 08111A, 08111D, 08111E,
MUE6202S, 5008111, 8111D, MUE6302S
801-00845, 8111, 8111A, 8111B, 8111D, 8111E,
MUE-6202, MUE-6302SW8911D, 08111B, 3130105, M3190112,
700092514, 319-0112, 80100845, M3100262

(APPLICATIONS)

(CESSNA, DYNAJACK, TOMMY LIFTS
MTE, BUCHER, MONARCH HYDRAULICS)**“WMS” NUMBER, W-8999D**

12V (CCW/DBB) SLOT SHAFT MOTOR

(2) FIELD COIL HIGH RPM MOTOR

REPLACES NUMBERS,46-2624, 2200478, 2200820, MUE-7006,
W8999, W8999D, 39200292, 39200380,
9130450064, 016579, 9130450081
913045008112, MUE-7004, MUE-6201,
9130450032, 2200849, 2200727

(APPLICATIONS)

(ANTHONY EQUIPMENT, HALDEX/BARNES
CONCENTRIC, WALTCO, MONARCH ,
MTE HYDRAULICS)**“WMS” PART NUMBER, W-9993D**

12V (DBB) (CCW) SLOT SHAFT MOTOR

REPLACES NUMBERS,8080, MHN-4001, MHN-4003, MHN-4005,
MHN-4006, M3100, 2200653, MUE-6107,
9993D, MUE-6112, 8092, 8112, 5008112

(APPLICATIONS)

(BUCHER / MONARCH HYDRAULICS)
(TOMMY LIFTS, THIEMAN TAILGATES
EASTERN & MTE INDUSTRIES)

(THE W-9993D TYPE MOTORS HAVE

(4) SERIES FIELD COILS)

Motor has 1/4X20 thru bolts



ARMATURE SLOT SIZE
IS 1/4" / 0.256 / 6.50mm

"WMS" PART NUMBER, W-8031D

* 12V * (CCW) DBB (3") PERMANENT
MAGNET MOTOR FOR MONARCH AND
BUCHER EQUIPMENT (.8KW)

REPLACES NUMBERS,

W8031, M-2590112, 1330185,
4423720, 8110, W-8931, 14785, 17208,
50501, 56539, 82195, 2590100, 2590112

(APPLICATIONS)

(MONARCH & BUCHER PUMPS)
(LEVELERS FOR MOTOR HOMES)
(SIDE DOOR WHEELCHAIR LIFTS
FOR BUSES AND VANS ETC.)



"WMS" PART NUMBER, W-6307

12V (CW) (DBB)
PRIMER PUMP MOTOR W/GRD/STUD
"COMPLETE WITH SWITCH"

(SHAFT HAS KEY SLOT AND PIN HOLE
THRU .625" DIAMETER SHAFT)

REPLACES NUMBERS,

W6307, MUE-6207,
MUE6207S, MUE-6307, MUE6307S
(APPLICATIONS) (HALE PRIMER PUMP)
(POWER WHEELS,PUREX, WATEROUS)



"WMS" PART NUMBER, W-6410

12V (CW) (DBB)
PRIMER PUMP MOTOR W/GRD/STUD
"COMPLETE WITH SWITCH"

REPLACES NUMBERS,

V3203, W-6210, 46-4219, MUE-6210,
W6410, MUE-6210S, MUE-6310
(APPLICATIONS)
(WATEROUS COMPANY, WISCONSIN ENG.)
(MOTOR HAS A SLOT SHAFT ARMATURE
USE DRIVE END FRAME FROM OLD UNIT)
(MOTOR HAS A GROUND CABLE STUD)
(THE W-6410 IS 6" LONG)



"WMS" PART NUMBER, W-6552

"OEM" *12V* (CW) (DBB)
PRIMER PUMP MOTOR "COMPLETE W/SW"
(HAS RECESSED SLOT SHAFT ARMATURE)

REPLACES NUMBERS,

W6552, W-6519, ESP12, MCL6201, MUE-6215S,
200-0041-00-0, 200-0042-00-0, ESP12, MCL-6201S
(APPLICATIONS)

(HALE PRIMER PUMPS) (2000 <> 2010—2015)
(RING DIAMETER ON DE IS 3.25" / 82.55mm)

(Overall length of this "OEM / HD" motor is 8")



"WMS" PART NUMBER, W-6563

"OEM" *12V* (CW) (DBB)
PRIMER PUMP MOTOR "COMPLETE W/SW"
(HAS RECESSED SLOT SHAFT ARMATURE)

REPLACES NUMBERS,

W6552, ESP-12, MCL6201, MUE-6215S,
ESP12200-0041-00-0, 200-0042-00-0, MCL-6201S
(APPLICATIONS)

(HALE PRIMER PUMPS) (2000 <> 2010—2015)
(RING DIAMETER ON DE IS 3.25" / 82.55mm)

(Overall length of this "OEM/HD" motor is 8")
THIS IS THE LATEST STYLE 12V HALE MOTOR



"WMS" PART NUMBER, W-6599

"OEM" *12V* (CW) * HD * (DBB)
PRIMER PUMP MOTOR W/SWITCH"

REPLACES NUMBERS,

46-2605, 46-2155
200-0040-00, MCL-6225, MCL-6225A,
MCL-6228, MCL-6508T, MCL-6508,
W6599, MAY-4301, MAY-4301S
(APPLICATIONS)

(HALE PRIMER PUMPS)
(POWER WHEELS,PUREX,WATEROUS)
(FOR A MOTOR WITH THE LATE PLASTIC
SWITCH USE W-6559)

**“WMS” PART NUMBER, W-8805**

12V REP. FOR 4.8” Dia. MEYERS AND BUYERS

REPLACES NUMBERS,

M-2100, M-5000, W-8800, 4854420M048HM,
M4854420HM02223, 485440, 690-060,
0462800108, 9107, LMY0002, 36218, 0202000
430-21001, 26232A, B422340X6329

(APPLICATIONS)

(MEYERS, BUYERS, ETC. SALT SPREADERS)

*(WITH SEALS AND O-RINGS
TO HELP KEEP WATER OUT)*

(Shaft diameter is .511 with woodruff key)

(Shaft length is 1.2”) (985 RPM)

**“WMS” PART NUMBER, W-8858**

12V REP. FOR 4.8” Dia. ROCKIT CORP.

REPLACES NUMBERS,

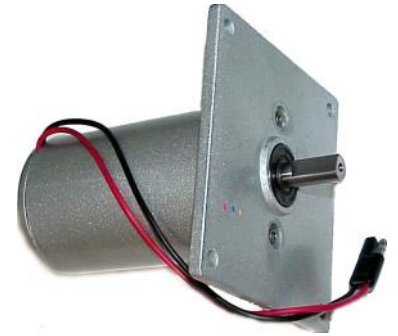
50084, W8858

(APPLICATIONS)

(ROCKIT CORP. & BLIZZARD
SALT & SAND SPREADERS)*(WITH SEALS AND O-RINGS
TO HELP KEEP WATER OUT)*

(Shaft diameter is .625 with bar key slot)

(Shaft length is 1.5”) (985 RPM)

**“WMS” PART NUMBER W-8018*** 12V * (3” Dia.) SPREADER MOTOR
FOR BUYERS EQUIP.REPLACES NUMBERS,

EX0712, BPC12, 062804, 3005414, 3005693,
EX-0712, BP801-0058, BP801-005B, BPC-12

(APPLICATIONS)

(BUYERS SALT SPREADERS)

*(Shaft length is 1.4” Shaft diameter is .500
with flat area for a set screw)**(WITH SEALS & O RINGS TO HELP
KEEP WATER OUT)***“WMS” PART NUMBER W-8815**

12V 3” DIAMETER (PM) MOTOR
1/2” SHAFT DIAMETER, 2” SHAFT LENGTH
FOR THE WESTERN AND FISHER STYLE SALT
SPREADER EQUIPMENT

REPLACES NUMBERS,

064953, 65416, 022-064953-7-022,
0220649537022, F9524, F9524A, 069616787209,
06961678,054-94-1242-0434 0549412420434,
5061, 107974490221, 1220182, 1220182H,
1409019, 301220182, 3012201820, 801220182H,
301220182H, 3D-1220182H, 3D1220182,
3D12201828, 3D1220182D

*(WITH SEALS AND O-RINGS TO
HELP KEEP WATER OUT)***“WMS” PART NUMBER W-8015**

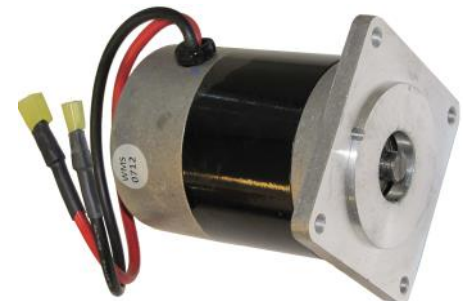
* 12V* DBB * (2) POST SPREADER MOTOR *
FOR SNO-WAY STYLE
1/3 & 1/2 HP SALT SPREADER MOTORS
SHAFT DIAMETER IS .5”, SHAFT LENGTH IS 2”

REPLACES NUMBERS,

113-0675092046, 96105846, 301217182D,
3D1217182D ETC.

(APPLICATION)

(SNO-WAY 6 & 9 RECEIVER SALT SPREADERS)

*(WITH SEALS AND O-RINGS
TO HELP KEEP WATER OUT)***“WMS” PART NUMBER, W-6832**

12V 3” DIAMETER “PM”
SLOT SHAFT SPREADER MOTOR

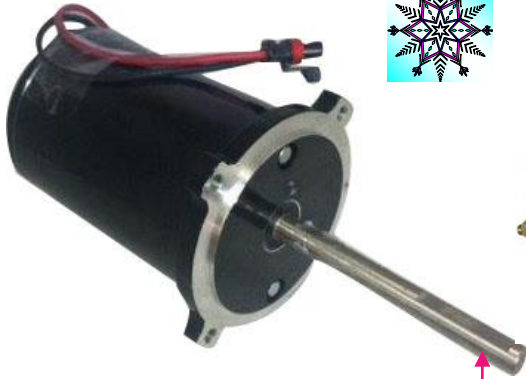
REPLACES NUMBERS,

W8832, 3006832, W-8832, BP801-G01

(APPLICATIONS)

(3” DIA. BUYERS SALT SPREADER)

*(Motor is 4.5” long)**(Mounting flange has 3” centers)**(The shaft slot is 0.100 / 2.54mm wide)**(Connector wires are 11” / 279.4mm long)*



“WMS” PART NUMBER, W-98987

12V (PM) SHA/MOTOR .5HP* (4.5” DIA.)
DBB “PM” MOTOR 5/8” SHAFT MOTOR
Has wires with connector plugs on the ends

REPLACES NUMBERS

D-6887

(APPLICATIONS)

(SP9300 & SP9500 MODEL SPREADERS)

(MOTOR IS 8.5” LONG)

(SHAFT LENGTH IS 5.8” WITH FLAT AREA)

(1/2HP) (800 RPM)

(FULL LOAD AMPS = 16)

(SHAFT HAS A SEAL AT THE DE)

“WMS” PART NUMBER, W-98985

12V (PM) SHAFT MOTOR .5HP* (4.5” DIA.)
DBB “PM” MOTOR 5/8” SHAFT MOTOR
W/BAR KEY (LEESON STYLE)

REPLACES NUMBERS,

C4D17NK73, A900906, 108046.00, 108047.00,
4BB01601, 108046, 108047, 17737
C4D17NK6B, 108051, 120Z402H/H2, 50090

(APPLICATIONS)

(CANIMEX & AIR FLOW SPREADERS)

FLO-TEC / SAND AND SALT SPREAD/MOTOR

(1/2HP) (1800 RPM)

(FULL LOAD AMPS = 40)

(OVERALL LENGTH OF MOTOR IS 8.5”)

(SHAFT IS 2” LONG WITH SEAL AT DE)

LEESON STYLE OF SCOTT MOTOR W4BB-1601

**“WMS” PART NUMBER,
W4BB-1601**

12V (CW) (4.5” DIA.)
DBB “PM” MOTOR 5/8” SHAFT MOTOR
W/BAR KEY

REPLACES NUMBERS,

W4BB1601, 4BB-01601, 17737, 50090,
4BB-01601, 120Z402H/H2

(APPLICATIONS)

(CANIMEX & AIR FLOW SPREADERS)

FLO-TEC / SAND AND SALT SPREAD/MOTOR

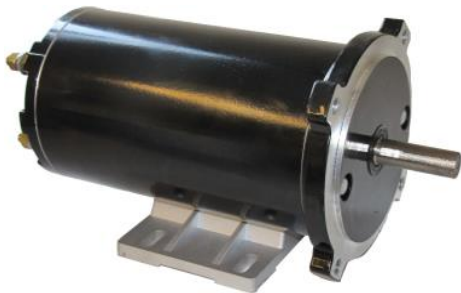
(1/2HP) (1800 RPM)

(FULL LOAD AMPS = 40)

(OVERALL LENGTH OF MOTOR IS 10.1”)

(SHAFT IS 2” LONG)

SCOTT MOTOR VERSION OF A W-98985



“WMS” PART NUMBER, W-98982

12V (CW) 1/2HP (4.5” DIA.)
DBB “PM” MOTOR 5/8” SHAFT MOTOR
W/BAR KEY

REPLACES NUMBERS,

W4BB1367, 4BB-01367, BA-3614
BA-36167065, 4648-9-48B

(APPLICATIONS)

(MISC./ MOBIL EQUIPMENT)

MOTOR FOR AUGERS AND SPREADERS

(1/2HP) (1800 RPM)

(FULL LOAD AMPS = 40)

(OVERALL LENGTH OF MOTOR IS 8.5”)

(SHAFT IS 2” LONG WITH SEAL AT DE)

“WMS” PART NUMBER, W-98984

12V (CW) 1HP (4.5” DIA.)
DBB “PM” MOTOR 5/8” SHAFT MOTOR
W/BAR KEY

REPLACES NUMBERS,

W4BC1368, 4BC-01368
17737, 50090

(APPLICATIONS)

(MISC./ MOBIL EQUIPMENT)

MOTOR FOR AUGERS AND SPREADERS

(1HP) (1800 RPM)

(FULL LOAD AMPS = 80)

(OVERALL LENGTH OF MOTOR IS 11.5”)

(SHAFT IS 2” LONG WITH SEAL AT DE)

“WMS” PART NUMBER, W-98986

12V (CW) 1HP (4.5” DIA.)
DBB “PM” MOTOR 5/8” SHAFT MOTOR
W/BAR KEY

REPLACES NUMBERS,

W4BC1602, 4BC-01602, 10867800,
108677.00, BA3630-4126-56C

(APPLICATIONS)

(MISC./ MOBIL EQUIPMENT)

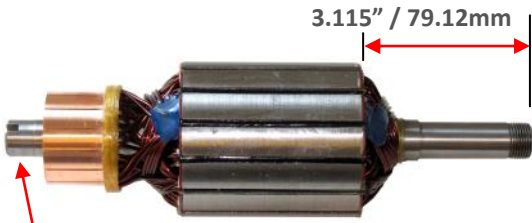
MOTOR FOR AUGERS AND SPREADERS

(1HP) (1800 RPM)

(FULL LOAD AMPS = 80)

(OVERALL LENGTH OF MOTOR IS 11.5”)

(SHAFT IS 2” LONG WITH SEAL AT DE)



Armature has a single slot across the CE of shaft showing it is for the GKR6104A type generator.

"WMS" PART NUMBER, WA-734N

*"NEW" *12V* BALL BEARING ARMATURE USE'S 6-203 BALL BEARING ON BOTH ENDS FOR GOODALL GEN/NUMBERS,*

79370, 79371, 79373, 79375, GKR-6104AS, GKR-6104A



PART NUMBER, GKR6105 & A

(*"DBB" GOODALL STARTING UNIT GENERATORS, REDEVCO, GOODALL*)
 REP. GKR-6104S, GKR6104A, 10626 GKR-6104A, 79-373, GKR-6104, 79373

Original Ametek Generator

Groove cut into the field frame identifies this as a GKR6105

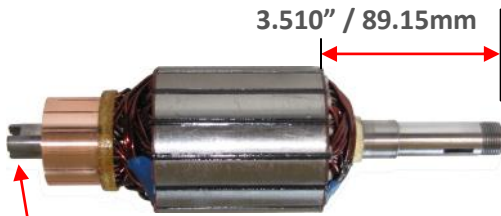


"WMS" PART NUMBER, W-5158

***24V* "CCW" TANG SHAFT MOTOR (INS / GRD.)**

REPLACES NUMBERS,
 W5158, 0805158, 0805839, 109512V, CR0805158, 183-430010V, 5158 CR-0805158, B05158

APPLICATIONS, CROWN & HPI



Armature has a crisscross slot across the CE of shaft showing it is for the GKR6105 generator.

"WMS" PART NUMBER, WA-6105N

*"NEW" *12V* BALL BEARING ARMATURE USE'S 6-203 BALL BEARING ON BOTH ENDS*

FOR GOODALL GEN/NUMBER, GKR-6105, GKR6105S, GKR6105



Part # WB-1179

Part # WB-1180

REPLACES NUMBERS,
 GJH-1032S, GJH-2012C, GJH-2012CS
 FOR GENERATOR NUMBERS, GKR-6104A GKR-6104S, GKR-6104AS, GKR-6105
 L - .645 <> W -- .695 <> T - .345 <> LL --2.50 LONG

FOR BRUSH HOLDER WITH SPRINGS ORDER "WMS" PART NUMBER, MDL1064AD



"WMS" PART NUMBER, WBHK-5158

COMPLETE BRUSH HOLDER ASSEMBLY FOR MOTOR NUMBERS, W-5158 & W-5258

APPLICATIONS, CROWN & HPI



***24V* "CCW" 3.7" DIA./MOTOR W/TANG SHA.**

"WMS" PART NUMBER, W-5800

REPLACES NUMBERS, W5800, 58012669, 58001-36069, 58001360-69, 5800126-69, 5800126

(APPLICATIONS) (YALE HYDROPERFECT)

(WITH 24" LONG CABLES FOR THE TERMINALS)

(Raised alignment ring diameter is 2.50" / 63.05mm)

Shaft is 9.9mm (.355") & 3.81mm (.150") flat to flat

(6.6mm mounting hole to hole across is 3" / 76.2mm)

(NEW HD REPLACEMENT FOR THE FRENCH MOTOR)



FRENCH STYLE



MOTOR COVER PROTECTS MOTORS FROM RAIN, SNOW . FOR THE 3" DIA. MOTOR

"WMS" PART # SRMC



MOTOR COVER PROTECTS MOTORS FROM RAIN, SNOW . FOR THE 4.5" DIA. MOTOR

"WMS" PART # RMC

****For other distributors in your area call us toll free at 1-800-810-0401****



We also carry a variety of quality switches from Iskra, Ametek Prestolite, SPX, Trombetta etc.

ALABAMA Manville Electric Birmingham, AL. 800-423-2857	ALABAMA B & B Auto Crane Mentone, AL. 256-634-4000	ALASKA Auto Electric Sales Anchorage, AK. 800-478-2606	CALIFORNIA Alex Auto Electric Bloomington, CA. 909-877-1314	CALIFORNIA R & T Liftgate Fontana, CA. 909-350-3751	CONNECTICUT Precision Devices Wallingford, CT. 800-242-2117
FLORIDA Battery USA Orlando, FL. 407-737-6695	GEORGIA Warfield Electric Conyers, GA. 800-476-1222	GEORGIA Turbo Diesel & El. Forest Park, GA. 800-241-4389	GEORGIA Nash HD Truck Parts Athens, GA. 706-549-7914	ILLINOIS Forest City Auto El Rockford, IL. 800-336-7737	ILLINOIS P & G Keene Elect. Bridgeview, IL. 800-443-5770
ILLINOIS Master Motor Reb Addison, IL. 800-368-8558	ILLINOIS Int. Winding Inc Villa Park, IL. 800-323-7521	ILLINOIS Ram Tech. Group Bolingbrook, IL. 630-409-9454	INDIANA Vans Rebuilt Ser. Indianapolis, IN. 800-428-4049	MASSACHUSETTS A-1 Battery & Elect. Quincy, MA. 800-550-1586	MICHIGAN Diesel Equipment Pottersville, MI. 888-769-8000
MICHIGAN Dubois Marketing Allendale, MI. 800-253-5654	MINNESOTA Alts Starters & Parts Mendota Hts., MN. 800-833-9096	MISSOURI Warfield Electric Fenton, MO. 800-272-6000	MISSOURI B & C Truck Elect Kansas City, MO. 800-821-5172	MISSOURI M & M Forklift St. Louis, MO. 800-622-0069	MISSOURI Ultimate Services Riverside, MO. 866-636-0874
NEW JERSEY Metropolitan Dist Garfield, NJ. 800-562-6975	NEW YORK D & W Diesel Auburn, NY. 800-336-7722	NEW YORK Mondial Automotive Flushing, NY. 888-312-3327	NO. CAROLINA American Auto Charlotte, NC. 704-333-0561	OHIO Custom Electric Ser Cleveland, OH. 866-615-4538	TENNESSEE A & B Inc. Nashville, TN. 800-342-1496
TEXAS Alternator Service Dallas, TX. 800-527-9635	TEXAS B & C Truck Elect. Irving, TX. 866-434-2782	TEXAS Pearland Alternator Pearland, TX. 800-966-6672	TEXAS Texas Alternator Austin, TX. 877-839-2581	TEXAS Texas Alternator San Antonio, TX. 877-839-2587	TEXAS Wood Alt & Starter Houston, TX. 877-448-0477
VIRGINIA Metro HD. Dist. Roanoke, VA. 800-296-8995	WASHINGTON Precision Auto El. Bothell, WA. 425-486-2332	WASHINGTON Romaine Electric Kent, WA. 800-426-5005	WISCONSIN Alstar Company Union Grove, WI. 414-427-7991	WISCONSIN Finicki Auto Electric Madison, WI. 608-243-8730	WISCONSIN Fondy Auto Electric Fond Du Lac, WI. 800-236-2701
AUSTRALIA Call for a listing of our distributors in this country	CANADA Atelier Dynamo Terrebonne, Quebec 866-471-8679	CANADA Brighthouse Auto El Richmond, BC 604-273-4904	CANADA Elreg Distributors Burlington, Ontario 800-387-4078	CANADA Newton's Electric Brampton, Ontario 800-644-1329	NEW ZEALAND Call for a listing of our distributors in this country

We also stock a variety of Iskra/Mahle/Letrika, Ohio, Imperial, Hannay, Scott, Ametek Prestolite motors & parts

